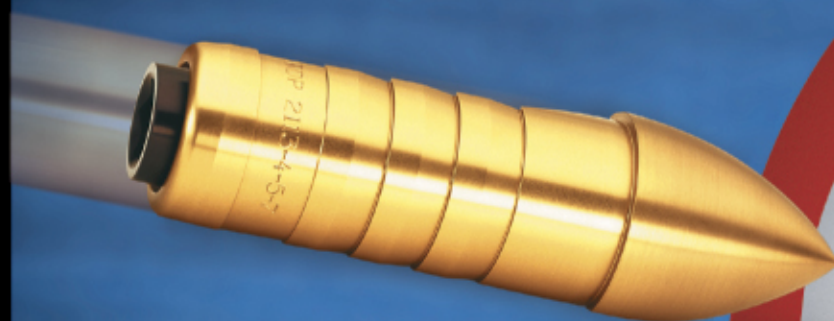


# GO FOR THE GOLD!



## ADJUSTABLE STEEL SPEED POINT

### TAKE CONTROL!

**"PDP points are the most adjustable points ever!"**

— Tom Crowe, NFAA National Champion, IBO World Champion,  
3 Time IBO Triple Crown Champion, 5 Time ASA Shooter of the Year

- Durable STEEL speed point allows any weight achievement!
- Accurate weights stack inside the point with standard hex wrench, or install 5, 10, or 30 grain weights through the Uni-bushing with PDP's innovative tool.
- Fine tune weight with 10 grain modules and final 5 grain set screw, or dramatically increase weight with any combination of 30, 50, or 100 grain modules. Adjust from 50 to 500 grains in 5 grain increments!
- Points are matched weight within 1/10 grain per pack.
- Lightest, most accurate point ever!



**DEMAND  
PERFORMANCE!™**

#### Model #

#### NEW! Sizes Available

PATENT  
PENDING



#### Weight

SPW5	5 grain set screw—1 per point as the last adjustment. Install through Gnock bushing with SPT.	5
SPW10	Use any quantity per point	10
SPW30	Use any quantity <u>except</u> on sizes up through 3-49 and 1716*	30
SPW30B	Bulged to fit inside Gold Tip, Express, etc. carbon shafts behind SPW30 or two SPW10's	30
SPW50	Use any quantity on sizes 2012 and 2112+	50
SPW100	Use any quantity on sizes 2412+	100
<b>SPW130</b>	<b>Slim to fit inside 2315-7-2419</b>	<b>130</b>
SPT	Speed Point Tool – installs 5, 10, & 30 grain weights through Uni-bushing	
SP-	3-18, 3-28, 3-39, 1712, 1716, 3-49, ICS/3-60, Express, Gold Tip, 3-71, 1812, 1813-4, 1816, 1912, 1913-4, 1916, 2012, 2013-4, 2016, 2018, 2112, 2113-4-5-7, V Maxx, Gold Tip 22, Nitro, 2212, 2213-5, 2216, 2219/Hippo, 2312, 2314, 2315-7-2419, 2412-3-5, X-Cutter, Linejammer	50 50 50
	2312, 2512, 2514, 2613, 395 Magnum (395 Mag 90 grain also available)	60
	ICS/360, Express, Gold Tip XT, 2212, Medalist, Fat Boy, CXL, 23 Speed, 2312, Linejammer, <b>GT 30X, 2512</b>	70
	2512, 2613	180
SP-PRO	Pro-Series – Upgrade points to within 1/10 grain of specified weight	



**PRECISION DESIGNED PRODUCTS™**





# PRECISION DESIGNED PRODUCTS™

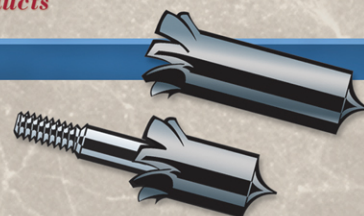
— ALL PDP POINTS ARE PRECISION MACHINED WITHIN 1 GRAIN —

*“PDP – Quality You’ll Love to Experience”  
— Gordon Johnson, Ultra Products*

## GameNabber ARROWHEAD

GN85-CP, GN100-CP, GN125-CP, GN160-CP, GN200-CP  
85, 100, 125, 160, 200 Grain Converta Point  
6 Qty Display Pack

GN125-5 & GN160-5  
125 and 160 Grain 5° Taper  
6 Qty Display Pack



*Ideal for small game, large birds, stump shooting, and carrying in quiver while hunting. Combines unparalleled shocking power and cutting surface. Performs like a mini-broadhead, yet resists sticking in trees or slipping under grass.*

## CONVERTA 3D/FIELD POINTS

*New smoother contour provides aerodynamic flight while extending target life, yet maintains durable tip. Stamped with size and weight for permanent identification.*

Model #	Diameter	75	80	85	90	100	125	145	175	200
CFP18	18/64 (9/32)	X	X	X	X	X	X			
CFP20	20/64 (5/16)	X	X	X	X	X	X	X	X	
CFP21	21/64		X	X	X	X	X	X		
CFP22	22/64 (11/32)		X	X	X	X	X	X	X	X

Order Model W/Size and Weight (Example: 21/64 diameter at 125 grains = CFP21-125)

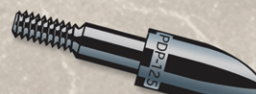


## CONVERTA BULLET POINTS

*Sharp tip and precise blend with body. Stamped with size for easy identification.*

Model #	Diameter	Weights Available					125	145
		75	80	85	90	100		
CBP18	18/64 (9/32)	X	X	X	X	X	X	
CBP20	20/64 (5/16)	X	X	X	X	X	X	X
CBP21	21/64			X	X	X	X	X
CBP22	22/64 (11/32)			X	X	X	X	X

Order Model W/Size and Weight (Example: 21/64 diameter at 125 grains = CBP21-125)



## EASY PULL POINTS

*Oversized and chamfered on the backside to drastically enhance removal from targets.*

Model #	Diameter	75	85	100	125	145	175	200	250
EP18	9/32 - for Axis/ACC	X	X	X	X	X			
EP21	21/64 - Carbons up to 5/16	X	X	X	X	X	X		
EP22	11/32 - 5/16 thru 11/32							X	X

Order Model with Weight (Example: 100 grain = EP21-100)



NEW!

## CONVERTA TARGET POINTS

*Light weight for flat trajectory. Stamped with size for easy identification.*

Model #	Diameter	55	65	75	Weights Available
CTP17	17/64		X		
CTP18	18/64 (9/32)	X	X	X	
CTP20	20/64 (5/16)	X	X	X	
CTP21	21/64		X	X	
CTP22	22/64 (11/32)		X	X	



## CONVERTA BLUNTS

*Small tip chamfer to prevent skipping. Stamped for easy identification.*

Model #	Diameter	100	125	Weights Available
CB20	20/64 (5/16)	X	X	
CB21	21/64	X	X	
CB22	22/64 (11/32)	X	X	





## GLUE IN TARGET POINTS

Economy steel points utilize Adjustable Speed Point weights (not included) SPW5, SPW10, SPW30 (sizes 1516+), SPW30B (sizes 1816+) for weight adjustment.

Model #	Sizes Available
GTP	1214, 1413, 1416, Trooper, Thunderglas, 1516, 1616, 1618, 1716, Express/GT-40, Express/GT-70, 1816, 1820, 1916, 2013-4, 2016, 2018, 2117, 2216



## 5° DART POINT

5° glue on point for Video Systems or small game/roving.

Model #	Shaft Diameter	Weight
5DP	ALL	125

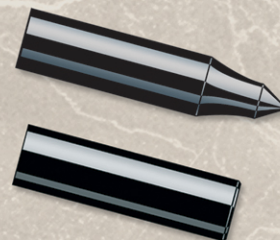


## 5° TAPERED FIELD POINTS

Smooth contour provides aerodynamic flight while extending target life. Extra deep tapered hole and thin wall to blend with shaft. Stamped.

Model #	Shaft	60	70	100	125	145	160	190
5FP1/4	1/4	X						
5TP5 (Target)	5/16		X					
5FP5	5/16		X	X	X			
5FP11	11/32			X	X	X	X	X
5FP23	23/64				X	X	X	X

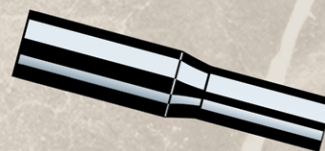
Order Model # — Weight (Example: 11/32 at 125 grains = 5FP11-125); 5B (Blunt) available 100-160 gr



## WOOD POINT ADAPTER

5° glue on aluminum outsert allows converta points to screw onto wood shafts.

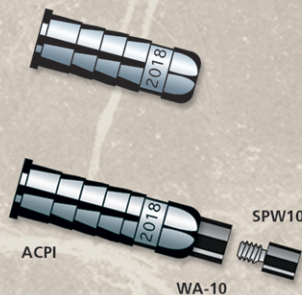
Model #	Shaft Diameter
WPA-5	5/16
WPA-11	11/32



## PREMIUM CONVERTA POINT INSERTS

Precision machined more accurately than industry standards to provide unbeatable broadhead alignment and light weight. Stamped for permanent identification. Weight adapters allow adjustable insert to utilize Speed Point Weight System.

Model #	Sizes Available
CPI Standard	1711, 1712, 1713, 1716, ICS/3-60, Express, Gold Tip XT, Nitro 1811, 1812, 1813-4, 1816, 1912, 1913-4-2020, 1916, 2012, 2013, 2014, 2016, 2018, 2112, 2113-4-5-7, 2212, 2213-5, 2216, 2219, 2312, 2314, 2315-7-2419, 2412-3-5, 2512, 2514, 2613
ACPI Adjustable	3-28, 3-39, 3-49, ICS/3-60, 3-71/1813-4, Express, Gold Tip XT, GT22, V Maxx, Nitro, 23 Speed, 395 Mag, 1916 thru 2613
WA-10 Weight Adapter	10 grain – Adapts Speed Point Weight System to Adjustable Insert.
WA-20 Weight Adapter	20 grain – Adapts SPW system to ICS & larger Adjustable inserts.



## CROSS BOW BOLT END

Add weight to the back with these Bolt Ends for more stability & penetration.

Model #	Bolt	Weight	SPW's to use
BE	Express/Gold Tip	20	SPW5, SPW10, SPW30B
BE	22 Series (GT, etc.)	30	SPW5, SPW10, SPW30B, SPW50
BE	2115-7	21	SPW5, SPW10, SPW30B (behind one SPW10)
BE	2216	23	SPW5, SPW10, SPW30B (behind one SPW10)
BE	2219	23	SPW5, SPW10, SPW30B (behind one SPW10)
BE	2315-7-2419	24	Not Adjustable





## 5° BROADHEAD ADAPTERS

Lightest weight aluminum adapters convert traditional 5° broadheads to converta points.

BA-Short Sml	20	1/2" long for some 2 blade broadheads w/replacable bleeder blades 5/16"
BA-Short Lrg	25	1/2" long for some 2 blade broadheads w/replacable bleeder blades 11/32"
BA-L/S	29	Breakaway adapter converts from long to short for 21/64" broadheads
BA-Long Sml	25	Small full length adapter for 5/16" broadheads
BA-Long Std	30	Standard full length adapter for 21/64" broadheads
BA-Long Lrg	35	Large full length adapter for 11/32" broadheads
BA-75, 100, 125	75, 100, 125	Heavy steel large full length adapter for 11/32" broadheads

*Lightest  
and Heaviest  
weights!*



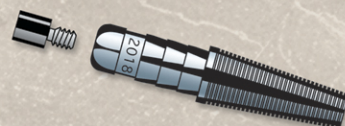
## GLUE IN 5° BROADHEAD ADAPTERS

New light weight! The only broadhead adapters the same weight as inserts.  
Simply remove the insert and glue in the adapter to maintain the identical weight!  
Adjust adapter weight with Speed Point weights SPW5, SPW10 and SPW30.

Model # Diameter

BA	Order by	Axis, 3-49/Epic, ICS/3-60(5MM), Express, Gold Tip XT, 1913-4-2020, 2013-4, 2016, shaft size	2018, Nitro(6MM), 2113-4-5-7-GT22(3-18), 2213-5(3-39,1716), 2216, 2219(3-28), 2314(3-49), 2315-7-2419(1816), 2412-3-5(1916)	Fits over sizes in ( )
----	----------	---	---	------------------------

Order Model # — Size (Example: 2018 Shaft = BA-2018)



## 5 GRAIN WEIGHT WASHER

New 5 grain brass weight washers for any converta point or broadhead.  
Adjust F.O.C. and spine stiffness instantly for identical broadhead  
and practice point flight. Machined both sides for accuracy.

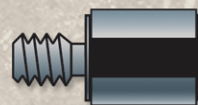
Model #	Diameter	Maximum Quantity	Model #	Diameter	Maximum Quantity
WW5-18	18/64 (9/32)	up to 2 per point	WW5-21	21/64	up to 3 per point
WW5-20	20/64 (5/16)	up to 3 per point	WW5-22	22/64 (11/32)	up to 4 per point



## STABILIZER EXTENSION

Stabilizer extension allows wrist strap to remain attached to the bow while the stabilizer is removed. Fits any standard 5/16-24 stabilizer hole.

Model # ST EXT



## GROOVYTOOL

Innovative new tool forms microscopic grooves inside ICS/3-60, Express, Vapor, Carbon Force, Carbon Tech, and Gold Tip XT shafts in 10 seconds, allowing glue to grip the shaft. NEVER have points pull out again!

Model # GT



*"I hunt to live so you can live to hunt!"*  
— Keith Jabben, President, PDP

## ORDERING INFORMATION

Place the letter "D" (Dozen), "C" (Hundred), or "M" (Thousand) after part number to select packaging quantity. (Example: CPI-2018D = 12 pk of 2018 inserts.)  
Prices include applicable excise tax and UPC Coding. F.O.B. Independence, KS.  
Terms: COD, credit card, or 2% 10/net 30 days if approved. No minimum orders.



01/05

# PRECISION DESIGNED PRODUCTS™

3999 CR 5200 Archery Lane • Independence, KS 67301 • (620)331-0333 • Fax (620)331-0555 • [www.pdparchery.net](http://www.pdparchery.net)

